

# Hako

Clean ahead

## Hako-Citymaster 1200

NEW



**CITY  
CLEANER**



City  
Cleaning

## Examples of Use

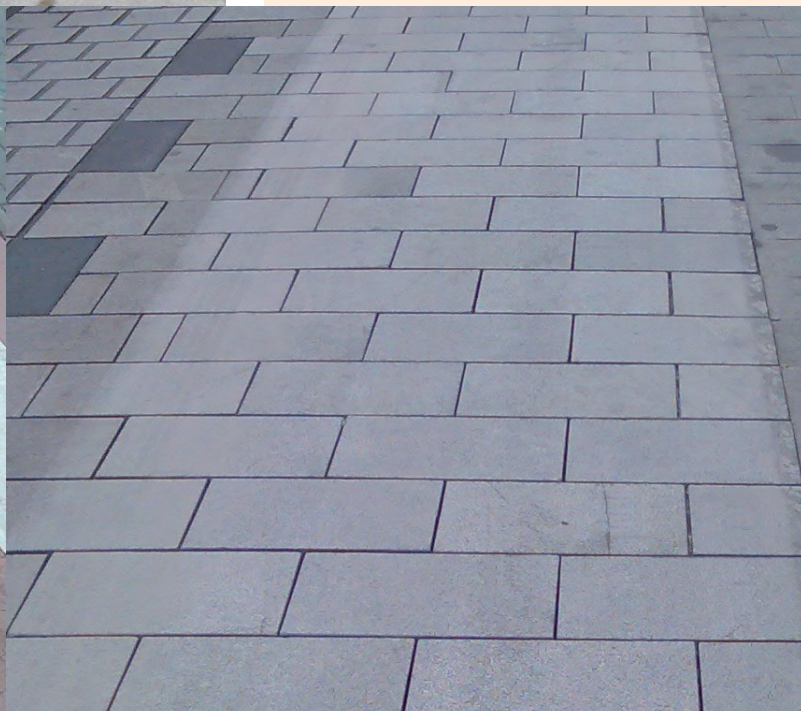
- The Citymaster 1200 City Cleaner stands for uncompromising wet cleaning for town centre areas such as, for example, pedestrian zones, footpaths and cycle paths, underground car parks and market places. With a working width of 1,330 mm the Citymaster 1200 City Cleaner with articulated steering is in its element, both on larger spaces as well as in narrow, restricted town centre areas.
- The three suspended brushes adapt to every type of surface and the highest possible degree of cleanliness is achieved. With the optional chemical dosage, cleaning agents can be added to enhance the cleaning performance.
- A variable pressure adjustment, which can be controlled from the driver's cab, can exert extra pressure on the brushes, depending upon the floor and layer of dirt. This is designed to improve the cleaning result even more. As a result of this combination, floor coverings can be completely revamped and they can shine in a totally new light.
- Furthermore the Citymaster 1200 City Cleaner can be used as a multi-functional machine and can, with the corresponding equipment, also be used, for example, for winter maintenance or grass care.



## Examples of Use



- **Epoxy Resin Coated Floors**  
Often used in multi-storey car parks and underground car parks.
- Brush: Sic 180 or PPN 0.8.
- No brush pressure.
- As a result of the closed surface area this higher working speed is possible.
- Clean water sufficient for approximately 30-40 minutes.
- When cleaning these surfaces the water dosage should be set so that a very thin film of water is put down on the floor.



## Examples of Use



### Collision Protection:

- To protect the City Cleaner, both outer elements are collision protected. Thus expensive collision damage can be avoided if the worst comes to the worst.
- The sides can fold back when they come into contact with obstacles, but then swivel back into the starting position again.



### Cleanliness with safety.

Hako machines adhere to strict quality regulations/standards – "Quality made by Hako". We also take care of what we sell – World-wide.



### Sales, hire, leasing, rental.

With Hako, you can plan your capital expenditure on a completely individual basis. You can enter into short-term, medium-term or long-term agreements with regard to machine usage.



### We are there for you day and night.

Round-the-clock service and express spare parts delivery – order today and have the parts tomorrow! So you can get on again as quickly as possible.



### Close to you, wherever you are.

The unsurpassed, close knit Hako sales and service network means we are always close at hand – a bonus when you need us. Convince yourself.